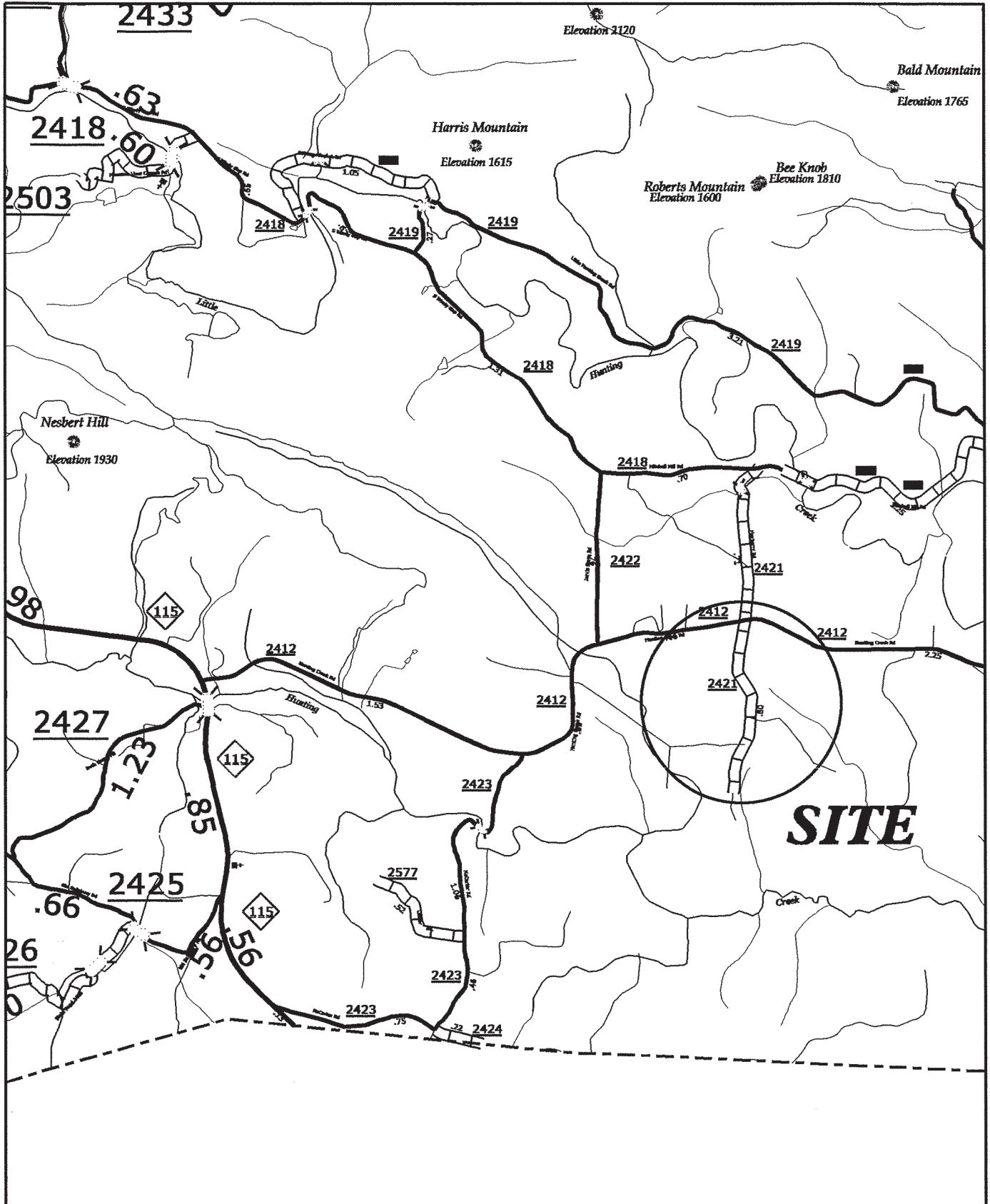


PROJECT NO.	SHEET NO.	TOTAL NO.
11C.097145, 11C.097108		
11C.097154		

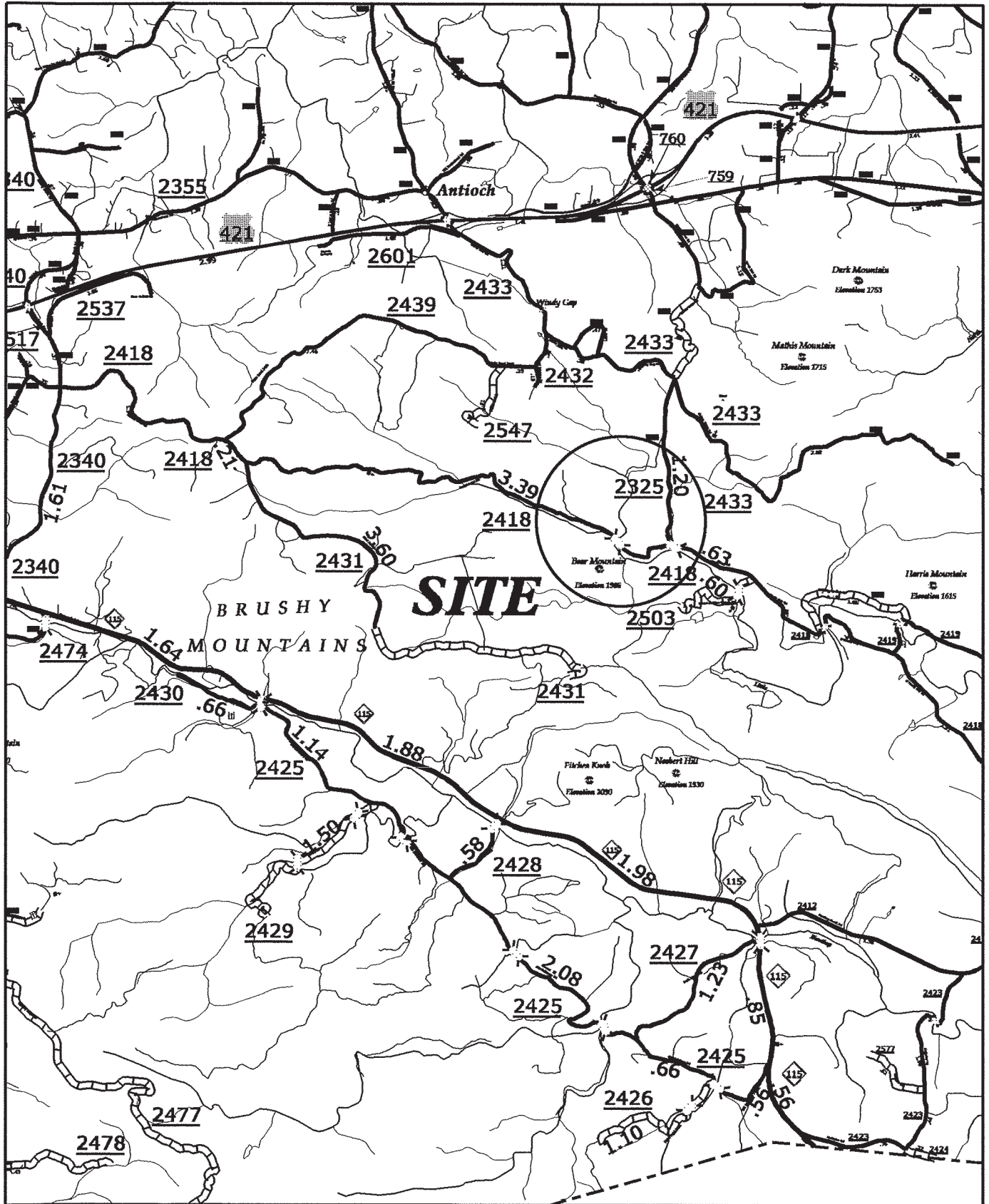
SUMMARY OF QUANTITIES

PROJECT NO.	COUNTY	MAP NO.	ROUTE	DESCRIPTION	TYP	LENGTH MI	WIDTH FT	BORROW CY	AGGREGATE BASE COURSE TONS	CONDITIONING EXISTING BASE SY	INCIDENTAL STONE BASE TONS	SHOULDER RECONSTRUCTION SMI	INTERMEDIATE COURSE, 19.08 TONS	ASPHALT BINDER FOR PLANT MIX TONS	ASPHALT SURFACE TREATMENT TRIPLE SEAL SY	SEED & MULCHING AC
11C.097145	Wilkes	1	SR 2421	FROM SR 2412 TO DEAD END	NO	0.858	18	86	150	9,563.00	50	1.72	1,042	50	9,061	0.83
TOTAL FOR PROJ NO. 11C.097145																
11C.097108	Wilkes	2	SR 2418	FROM END PAVEMENT TO BEGIN PAVEMENT	2	0.17	18	17		1,900.00	25	0.34	207	10	1,795	0.16
TOTAL FOR PROJ NO. 11C.097108																
11C.097154	Wilkes	3	SR 1235	FROM SR 1179 TO DEAD END	3	0.495	18								5,367	
TOTAL FOR PROJ NO. 11C.097154																
GRAND TOTAL																
						1.523		103	150	11,463.00	75	2.06	1,249	60	16,223	1.00

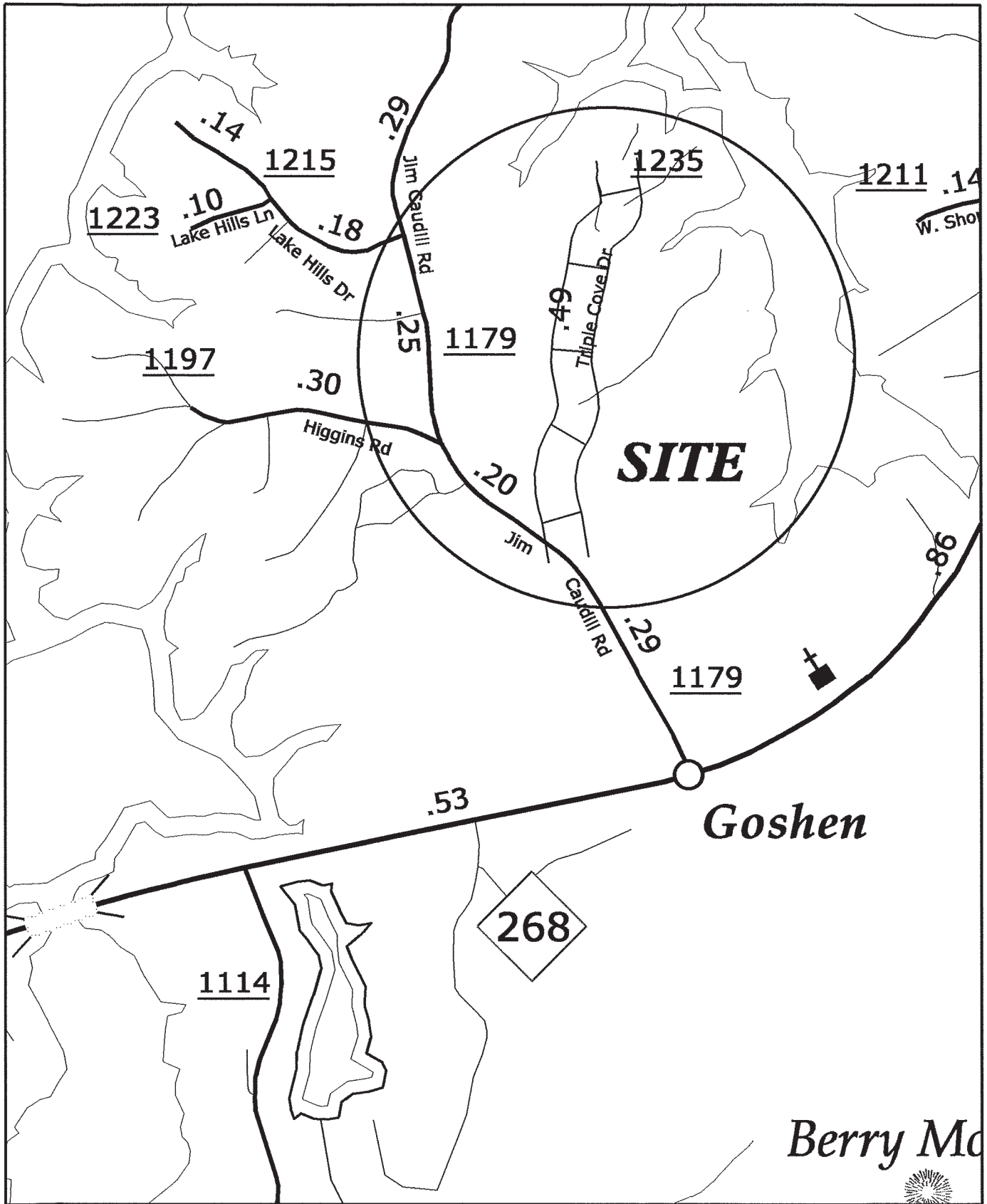
**SR 2421 SOUTH MAYBERRY RD. LOCATED OFF OF
NC HWY 115 TO SR 2412 HUNTING CREEK RD.
(2.88 MILES) TO BEGINNING OF PROJECT**



SR 2418 MOUNT SINAI RD. LOCATED OFF OF NC HWY 115 TO SR 2418 FISHING CREEK ARBOR RD. (2.43 MILES) TO SR 2418 MOUNT SINAI RD. (4.20 MILES) TO BEGINNING OF PROJECT



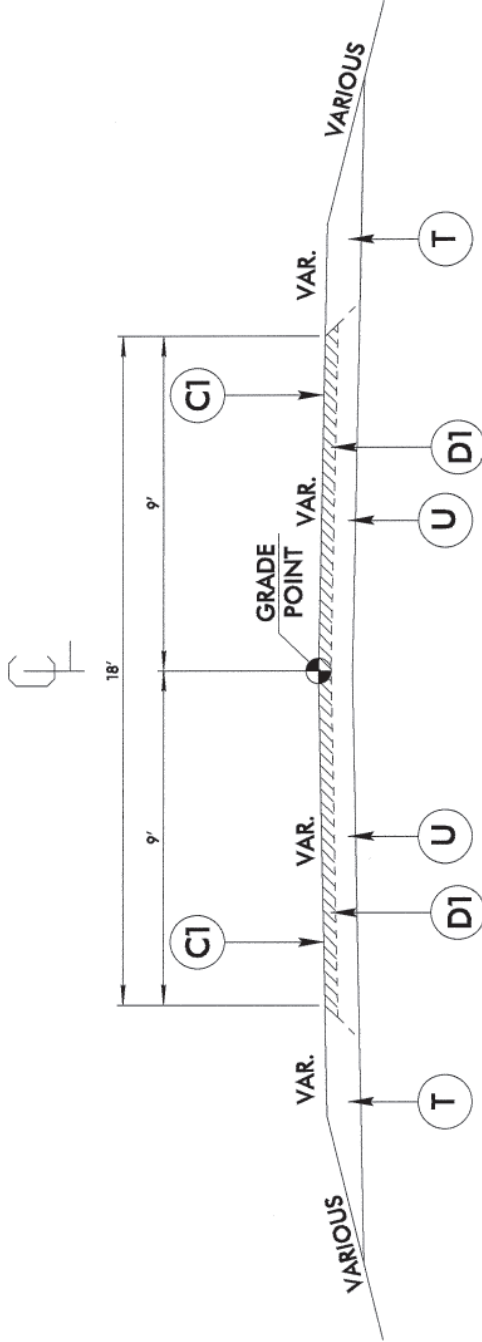
**SR 1235 TRIPLE COVE RD. LOCATED OFF OF
NC HWY 268 TO SR 1179 JIM CAUDILL RD.
(0.29 MILE) TO BEGINNING OF PROJECT**



Berry Mo

TYPICALS AND PAVEMENT SCHEDULES

PROJECT REFERENCE NO. IC097145
SHEET NO. 1



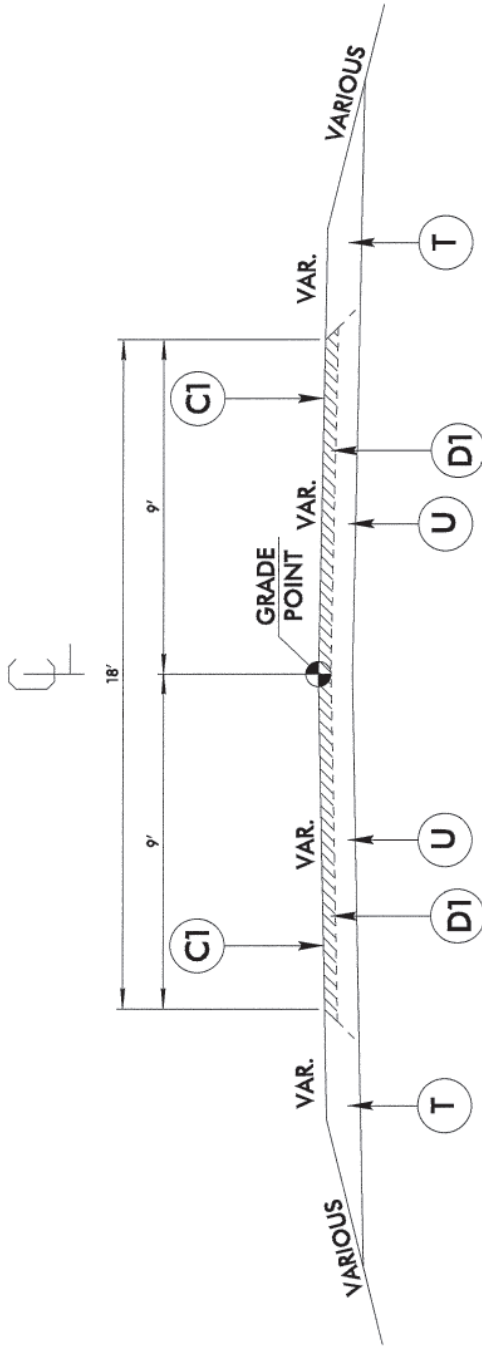
TYPICAL SECTION

SR 2421 SOUTH MAYBERRY RD.

C1	ASPHALT SURFACE TREATMENT (TRIPLE SEAL)
D1	PROP. APPROX. 2" ASPHALT CONCRETE SURFACE COURSE, TYPE 119.0B, AT AN AVERAGE RATE OF 226 LBS. PER SQ. YD.
U	EXISTING 8" AGGREGATE BASE COURSE.
T	PROPOSED SHOULDER MATERIAL

TYPICALS AND PAVEMENT SCHEDULES

PROJECT REFERENCE NO. 116097008
 SHEET NO. 2



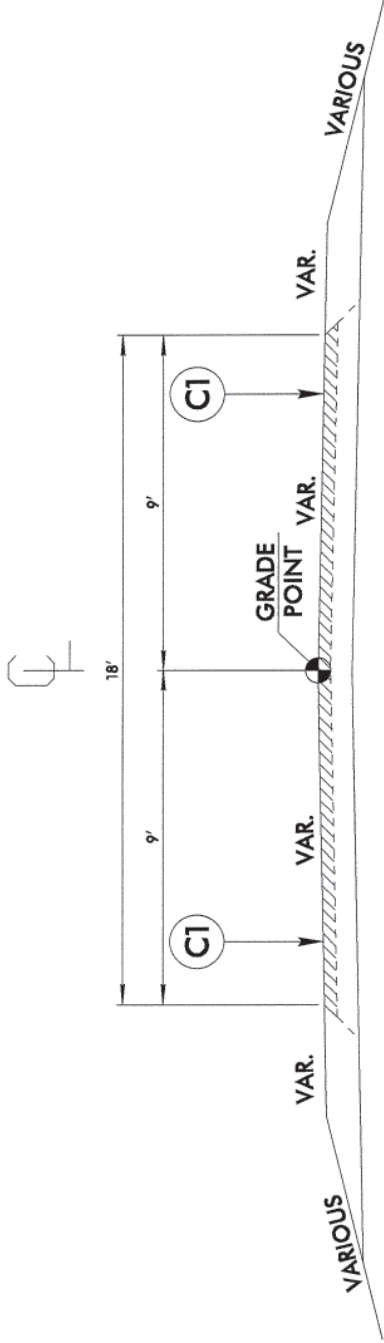
TYPICAL SECTION

SR 2418 MT. SINAI RD.

C1	ASPHALT SURFACE TREATMENT (TRIPLE SEAL)
D1	PROP. APPROX. 2" ASPHALT CONCRETE SURFACE COURSE, TYPE I19.0B, AT AN AVERAGE RATE OF 228 LBS. PER SQ. YD.
U	EXISTING 8" AGGREGATE BASE COURSE.
T	PROPOSED SHOULDER MATERIAL

TYPICALS AND PAVEMENT SCHEDULES

PROJECT REFERENCE NO. 11C02715-4
SHEET NO. 3



TYPICAL SECTION

SR 1235 TRIPLE COVE RD.

C1	ASPHALT SURFACE TREATMENT (TRIPLE SEAL)
----	---